

DE 170 Polar / DE 170 Q Polar In-Wall / In-Ceiling Speaker



Description

The DE 170 Polar is a heavy-duty, two-way speaker with compact dimensions and a large linear frequency spectrum. Music and speech are dynamically reproduced with exceptional clarity. Thanks to optimum omnidirectional dispersion characteristics, sound is distributed evenly throughout the space, even with just a few speakers.

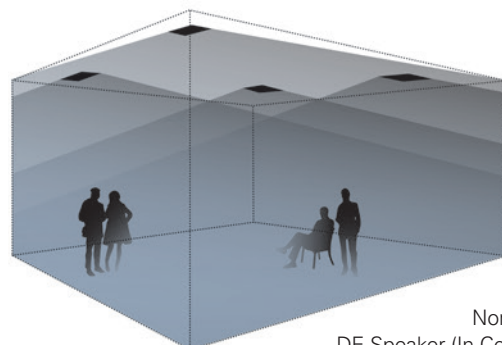
The DE 170 Polar is comprised of three parts. First the elegant installation frame is mounted in the ceiling or wall. The speaker unit and the magnetic front grille are then installed. This enables reliable installation and retrofitting, even for complicated installation scenarios.

Special Features

- 2-way system with Polar® technology
- 180° dispersion
- Perfect sound distribution with a small number of loudspeakers
- Very linear frequency response
- Small dimensions and installation depth
- 5.25" woofer + 1" dome tweeter
- 80 watts power capacity
- 8 ohm and 100 V versions
- Round or square
- Standard finish: white or black
- Moisture proof

Fields of Application

- Conference rooms
- Exhibitions, trade fairs
- Gastronomy, hotels
- Home audio
- Shops, sales rooms
- Surround systems



Nominal Dispersion
DE-Speaker (In-Ceiling Installation)

DE 170 Polar / DE 170 Q Polar In-Wall / In-Ceiling Speaker

Technical Data

Principle	2-way loudspeaker with Polar® technology
Components	5.25" woofer + 1" dome tweeter
Frequency range	60 Hz – 21 kHz
Impedance	8 ohms
Power capacity	40 watts RMS, 80 watts program
Sensitivity	86 dB SPL (1W@1 m), half-space (flush mounted)
Maximum SPL	105 dB @ 1 m, 100 V version: 101 dB @ 1 m
Nominal dispersion	180°
Dimensions	DE 170 Polar: Ø 174 mm DE 170 Q Polar: 174 × 174 mm
Cutout size	DE 170 Polar: Ø 158 mm DE 170 Q Polar: 158 × 158 mm
Wall thickness	8...30 mm
Installation depth	88 mm
Weight	1.3 kg
Material	Precision steel assembly frame and grille, powder-coated
Connectors	Screw type terminals, pluggable
Warranty	5 years

Model	Order Nr.	Version
DE 170 Polar White	0103-0013	Round, RAL 9016
DE 170 Polar Black	0103-0009	Round, RAL 9005
DE 170 T Polar White	0103-0014	Round, 100V versions
DE 170 T Polar Black	0103-0010	Power 7.5/15/30 watts
DE 170 Q Polar White	0103-0015	Square, RAL 9016
DE 170 Q Polar Black	0103-0011	Round, RAL 9005
DE 170 QT Polar White	0103-0016	Square, 100V versions
DE 170 QT Polar Black	0103-0012	Power 7.5/15/30 watts

Other colours and versions on request.

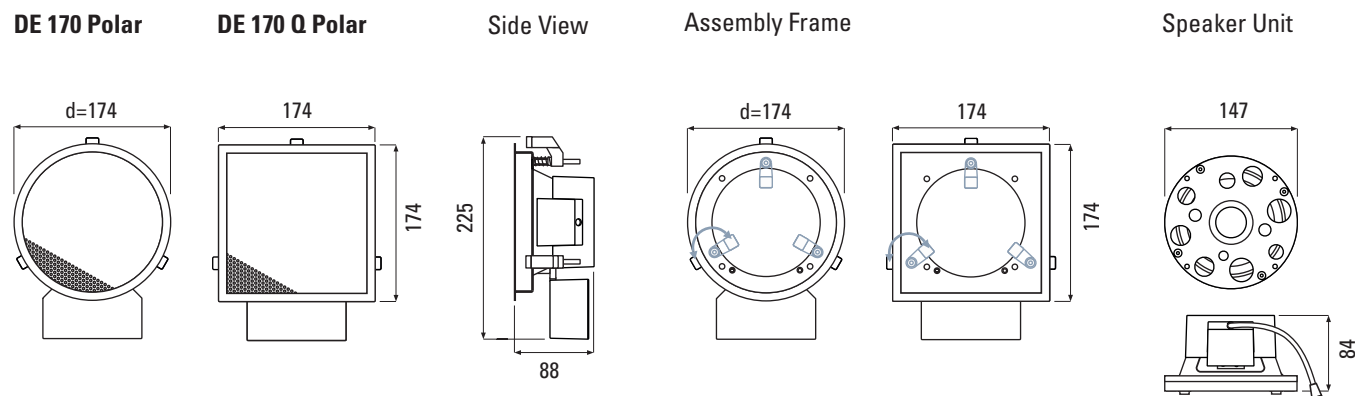


DE 170 Polar without grille








DE 170 Q Polar without grille

Dimensions



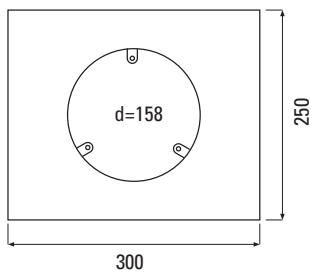
DE 170 Polar / DE 170 Q Polar In-Wall / In-Ceiling Speaker

Back Boxes	Order No.	Version
	EG 170 2218-0001	Back box for DE 170, all types, plastic, Dim.: 300 × 250 × 120 mm
	EG 170 Q 2219-0001	Back box for DE 170 Q, all types, plastic, Dim.: 300 × 250 × 120 mm
	EGB 170 2220-0001	Back box for concrete for DE 170, all types, plastic, Dim.: 300 × 250 × 148 mm (incl. rigid foam insert)
	EGB 170 Q 2221-0001	Back box for concrete for DE 170 Q, all types, plastic, Dim.: 300 × 250 × 148 mm (incl. rigid foam insert)
	DE-X Tool 0360-0001	Magnetic holder for effortless insertion and removal of front grille

Dimensions

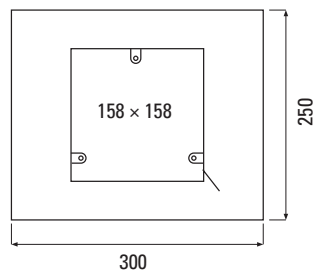
EG 170

Front



EG 170 Q

Front

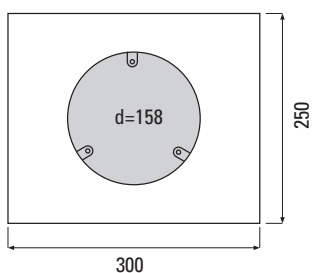


Side



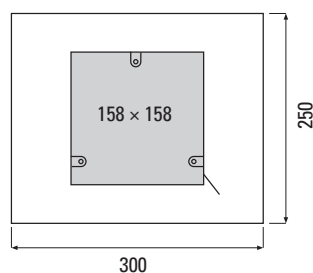
EGB 170

Front

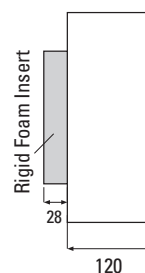


EGB 170 Q

Front



Side

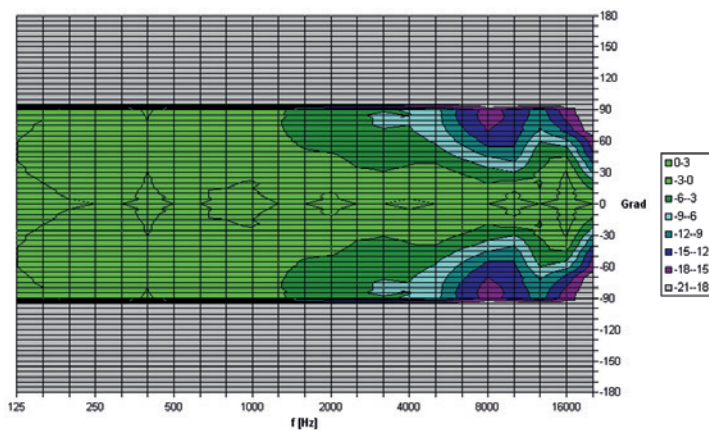
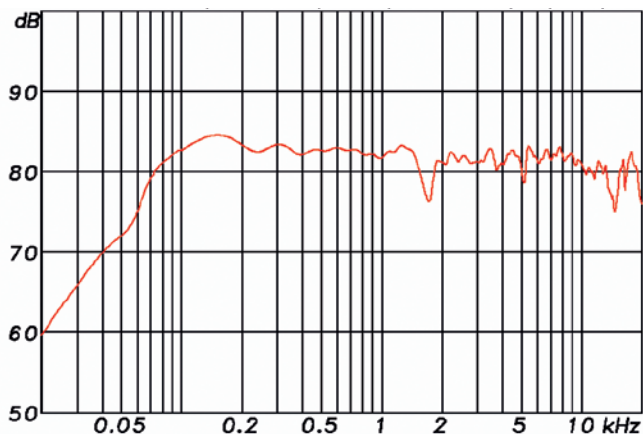


DE 170 Polar / DE 170 Q Polar In-Wall / In-Ceiling Speaker

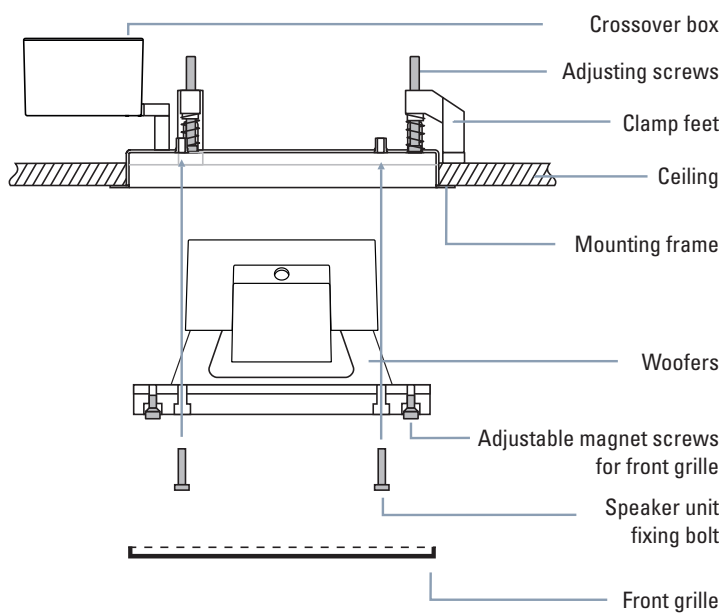
Measuring Diagrams

DE 170 Polar Sens. 2,83V/1m: 82,3 db (100-10k) 63 Hz - 20 kHz (-6 dB) half space

DE 170 Polar half space Directivity Plot



Assembly (Ceiling)



Installation Steps:

1. Slice cut out size in drywall surface (in solid walls / ceilings insert built-in cabinet of the EG series).
2. Insert assembly frame with clamp feet and swivel clamp feet outwards.
3. Adjust assembly frame with adjusting screws.
4. Connect chassis to crossover box and adjust.
6. Insert front grille and, where necessary, readjust the height-adjustable holding magnets.