



F 6 Monitor Speaker

Description

The F 6 is a compact reference loudspeaker for sophisticated music and PA systems. As a result of the combination of a highly resilient 6.5" woofer with a specially developed 1" neodymium dome tweeter and CD-horn the F 6 has an extensive, extremely linear frequency range and a precise directional characteristic with a constant beam width of 90° x 90°. The F 6 is employed as a main loudspeaker in audiophile music and surround systems for both home audio as well as studios and media rooms.

As an ideal supplement in the bass range we recommend the subwoofers B 10 B (passive) and B 10 A (active).

Special features

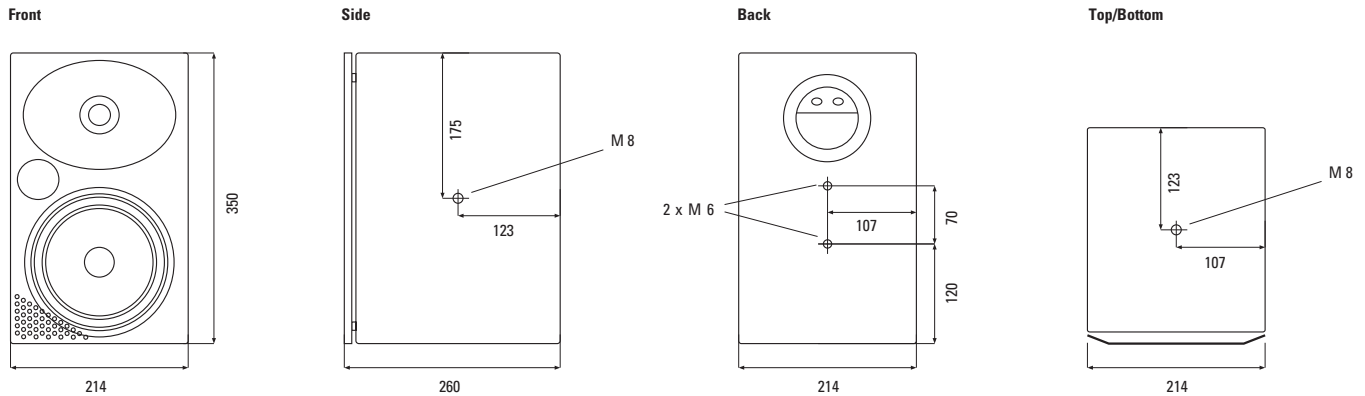
- 6.5" bass + 1" CD-horn
- Dispersion angle (H x V) 90° x 90°
- Power capacity 180 watts
- Extensive mounting accessories
- Standard colours white and black

Fields of application

- Home Audio
- Surround systems
- Studios
- Media rooms
- Conference rooms
- Gastronomy, hotels
- Musical pubs, bars

F 6 Monitor Speaker

Dimensions F 6



Technical data

Principle	2-way bass reflex
Components	6.5" bass, 1" dome tweeter with CD-horn
Frequency range	52 ... 22,000 Hz, 62 ... 20,000 Hz (+/-3 dB)
Impedance	8 ohms
Power capacity	RMS 90 watts, program 180 watts
Sound pressure	87 dB (1W/1m), max. 110 dB
Dispersion angle (H x V)	90° x 90°
Dimensions (W x H x D)	214 x 350 x 260 mm
Weight	8 kg
Cabinet	MDF, semi-matt varnish Threaded inserts M 6 on the side, above/below and behind Front metal grille
Connectors	Screw-type terminals
Warranty	5 years

Model

Order-No.

Version

F 6 White	0704-0001	RAL 9016
F 6 Black	0702-0002	RAL 9005

Other colours and models on request

Accessories

Order-No.

Version

UB 6 White	7114-0005	U-Bracket,
UB 6 Black	7114-0006	incl. mounting material



UB 6 Q White	7114-0007	U-Bracket,
UB 6 Q Black	7114-0008	for horizontal mounting incl. mounting material



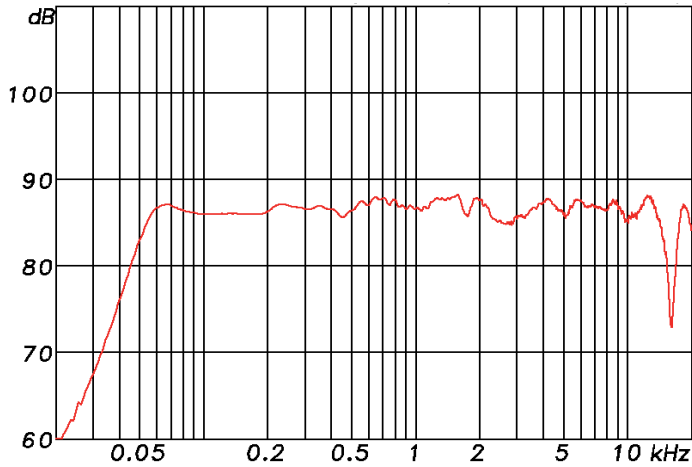
WH 350 White	7114-0028	Rotable/pivotable
WH 350 Black	7114-0029	wall-mount



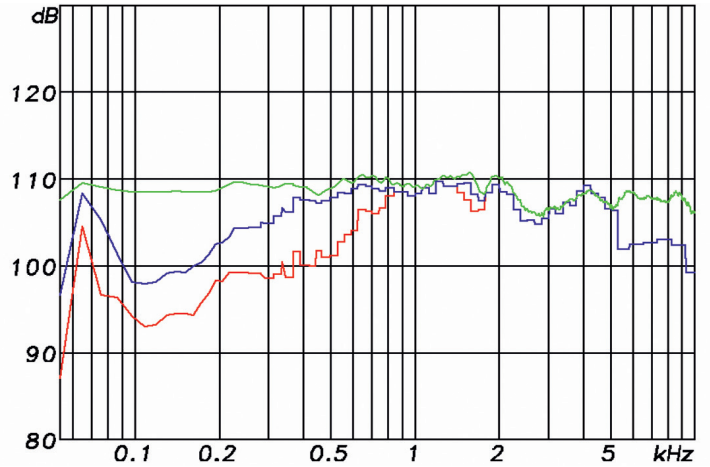
F 6 Monitor Speaker

Measuring Diagrams

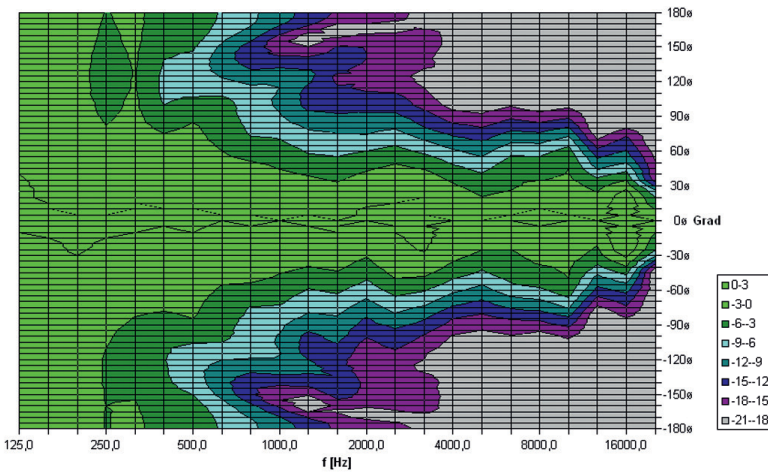
F 6 Sens. 2.83V/1m: 86.2 db (100-10k) 45 Hz - 20 kHz (-6 dB)



F 6 max. SPL @ 3% and 10% distortion threshold 180 W max. power



F 6 hor. directivity plot



F 6 vert. directivity plot

