

# AI Analytics Plugin

for Video Management Systems

Powered by  CVEDIA

# Table of Contents

- [Product description](#)
- [User interface](#)
- [Plugin features](#)
- [Plugin advantages](#)
- [Use cases](#)
- [Success stories](#)
- [How to get started](#)
- [Compatibility notes](#)
- [CVEDIA resources](#)
- [Roadmap and future plans](#)

# AI Plugin for a VMS of your choice

## For Security & Surveillance Applications

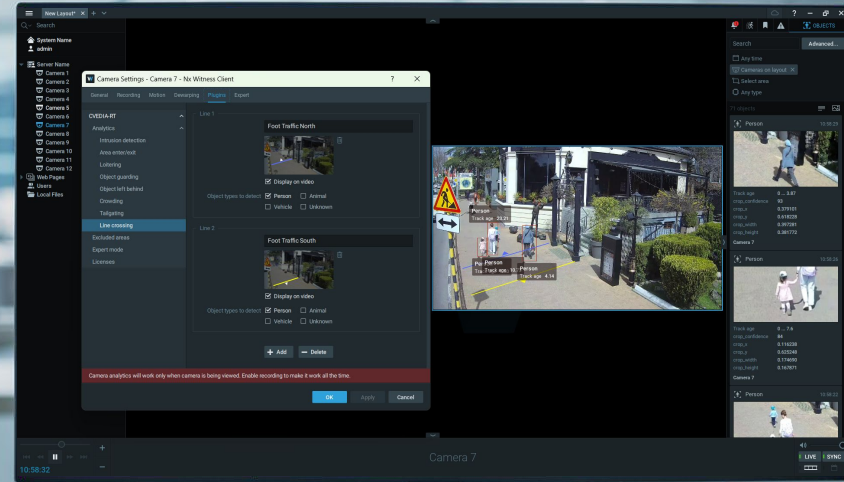
Compatible with:

- Nx Witness
- Nx META
- Wisenet WAVE
- DW Spectrum
- Piko
- Milestone XProtect



# AI Analytics Plugin

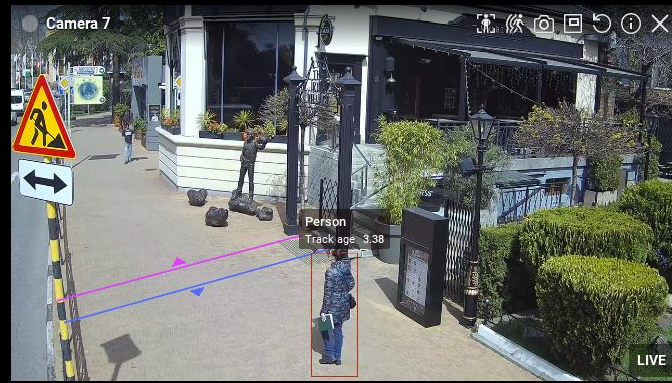
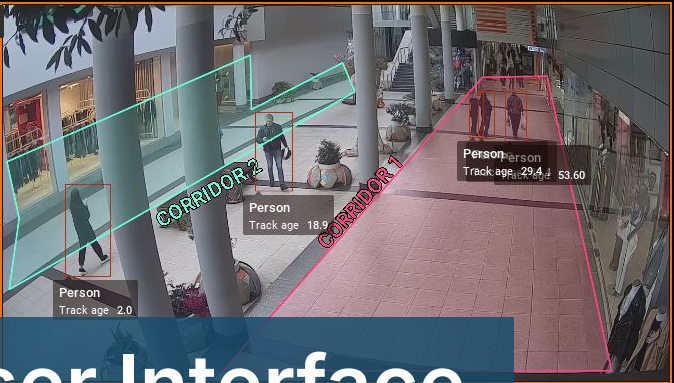
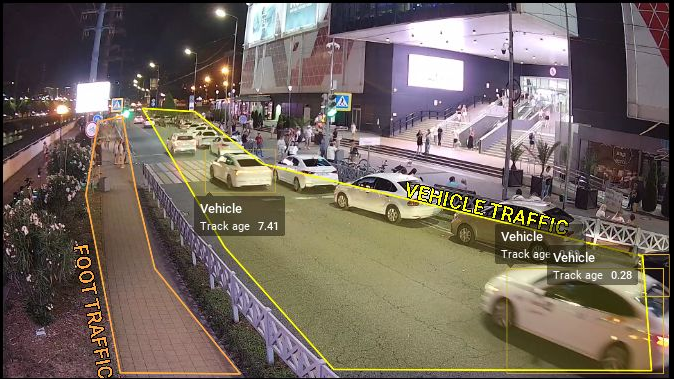
- **Quick Setup:** Install the plugin on your VMS Server in minutes
- **Seamless Integration:** Manage analytics directly within the VMS interface - no third-party systems required
- **Native Functionality:** Easily configure events, alarms, and triggers as you would with any built-in feature
- **Effortless Upgrade:** Access advanced security video analytics without the need to replace your cameras or servers



# AI Analytics Plugin

- Advanced AI capabilities on **legacy hardware**
- Unified solution for both **thermal** and **RGB** cameras
- Filter out people, vehicles, or animals to trigger **relevant alerts**
- Proven track record for decreasing persistent **false alarms**
- Accurate detections with different **weather** and **lighting** conditions
- Find the intruder fast within hours of footage with **retrospective search** by appearance

- Your System
- admin
- Your Server
  - Camera 1
  - Camera 2
  - Camera 3
  - Camera 4
  - Camera 5
  - Camera 6
  - Camera 7
  - Camera 8
  - Camera 9
  - Camera 10
  - Camera 11
  - Camera 12
- Web Pages
- Users
- Local Files



OBJECTS

Search Advanced...

Any time

Cameras on layout X

Select area

Any type

>99 objects

Person 19:39:29

Track age 0 ... 1.78

crop\_confidence 87

crop\_x 0.000000

crop\_y 0.538333

crop\_width 0.308571

crop\_height 0.296524

Camera 5

Vehicle 19:39:22

Track age 0 ... 8.92

crop\_confidence 94

crop\_x 0.069313

crop\_y 0.29017

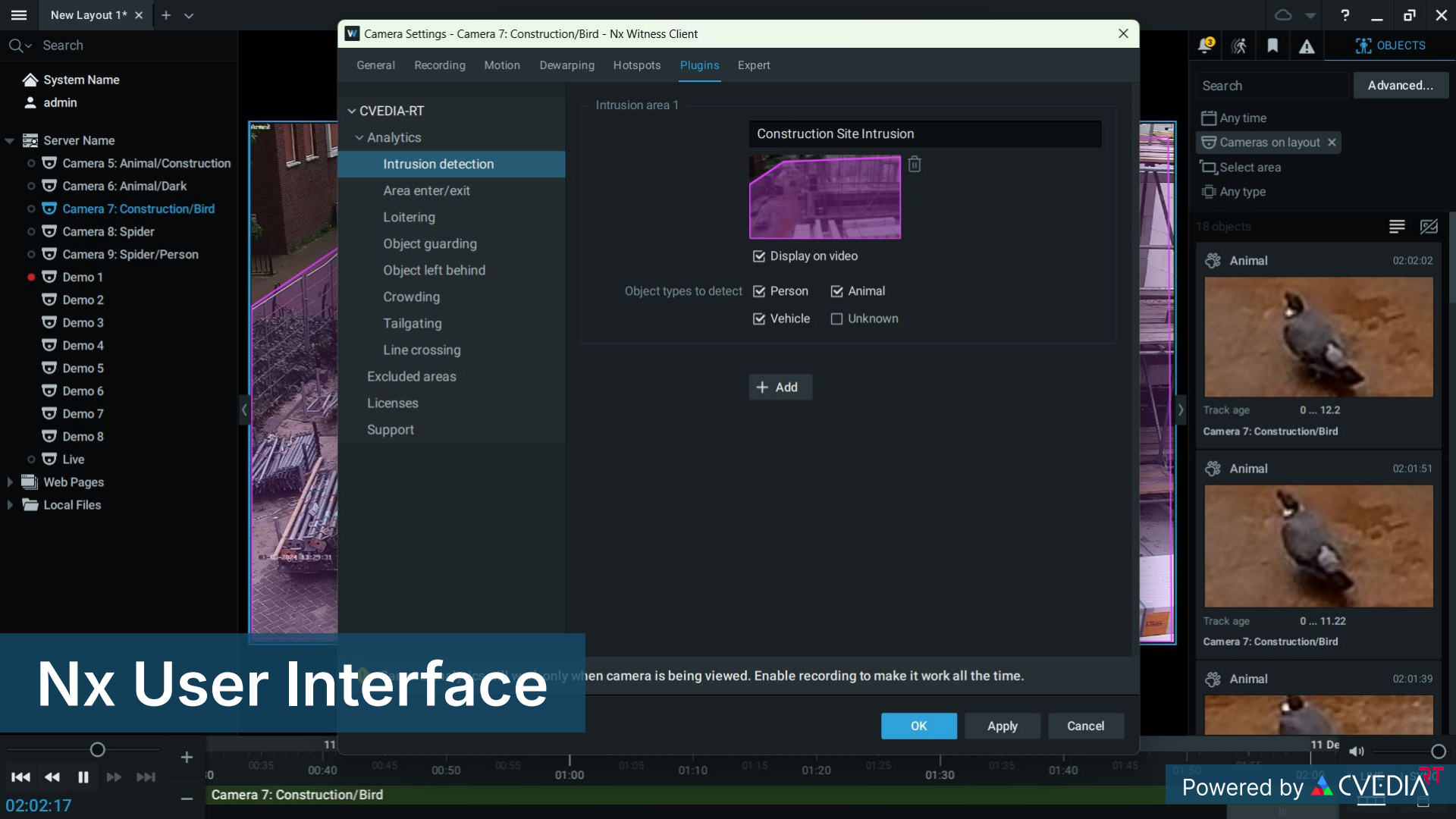
crop\_width 0.328365

crop\_height 0.315546

Camera 12

Vehicle 19:39:20

# Nx User Interface

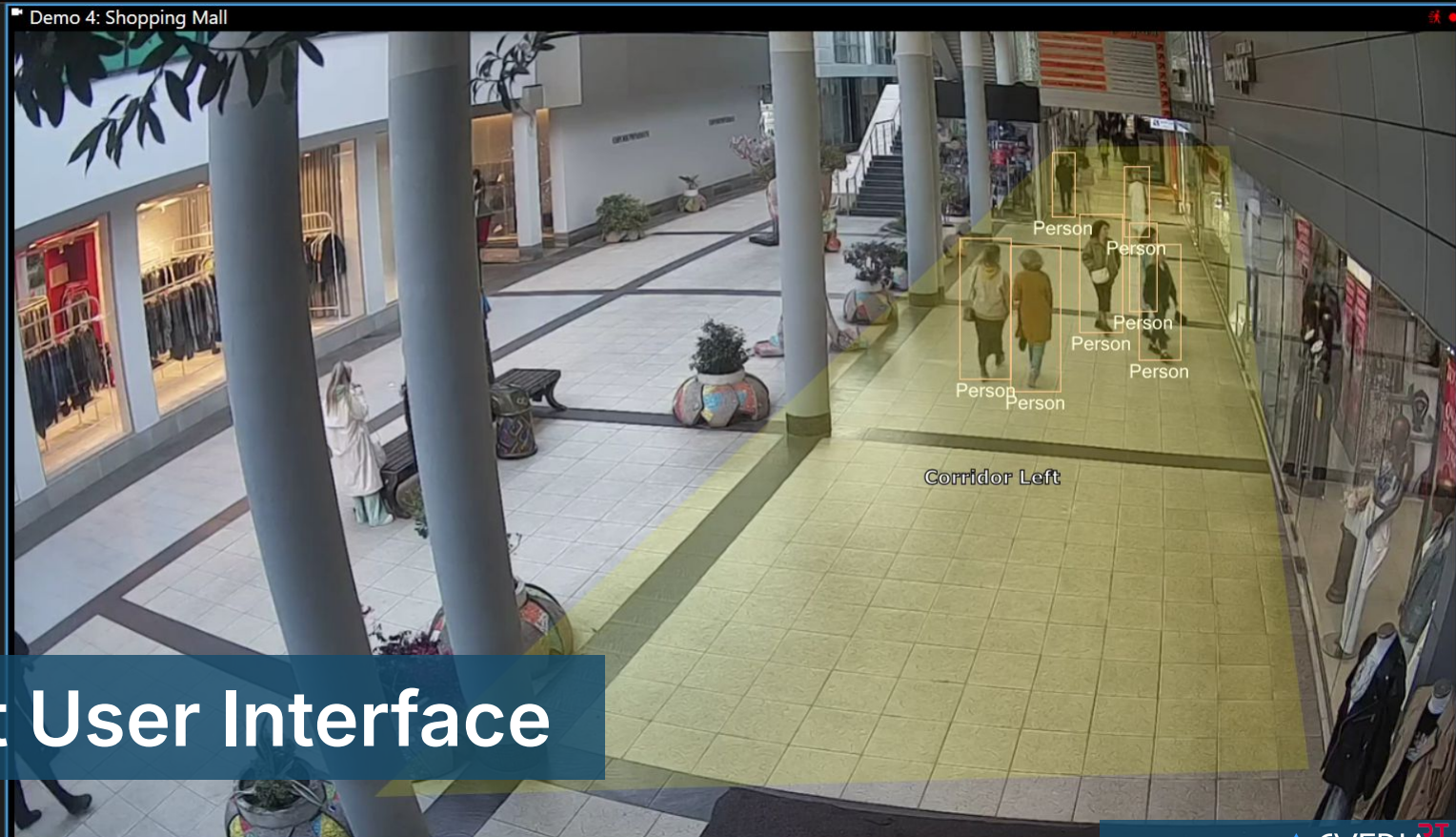


# Nx User Interface

...only when camera is being viewed. Enable recording to make it work all the time.

OK Apply Cancel

- Default group
  - Demo
    - Demo 1: Pedestrian Safety
    - Demo 2: Building Entrance
    - Demo 3: Parking Lot
    - Demo 4: Shopping Mall**
    - Use Case 1: Loitering
    - Use Case 2: Security
    - View 1
    - View 2
  - Operators
  - Private
  - Cameras
    - CVEDIA



# XProtect User Interface



- Default group
  - Demo
  - Demo 1: Pedestrian Safety
  - Demo 2: Building Entrance
  - Demo 3: Parking Lot
  - Demo 4: Shopping Mall**
  - Use Case 1: Loitering
  - Use Case 2: Security
  - View 1
  - View 2
- Operators
- Private
- Cameras
  - CVEDIA

### Analytics Setup


General settings

- Analytics
  - Intrusion detection**
  - Area enter/exit
  - Loitering detection
  - Crowding detection
  - Line crossing detection
  - Object left detection
  - Object removed detection
  - Tailgating detection
- Excluded areas
- Expert settings
- Global settings

Intrusion Detection

Enabled

Name



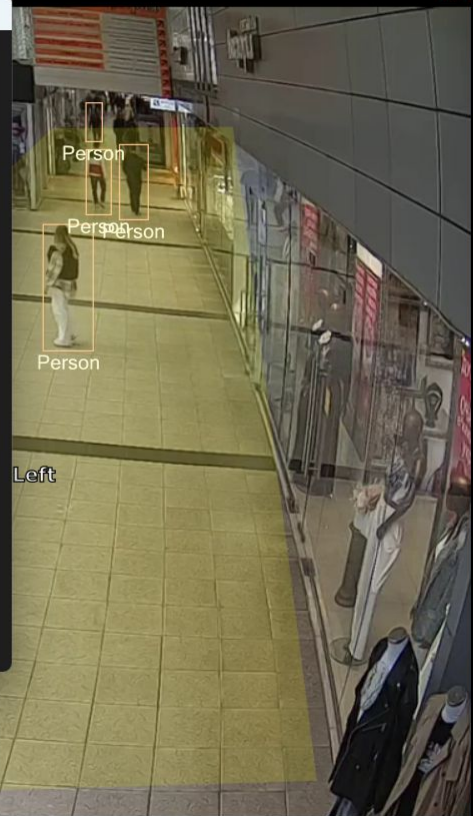
Display on Video

Object types to detect

<input checked="" type="checkbox"/> Person	<input type="checkbox"/> Animal
<input type="checkbox"/> Vehicle	<input type="checkbox"/> Unknown

**+ Add**

Ok Cancel



# XProtect User Interface

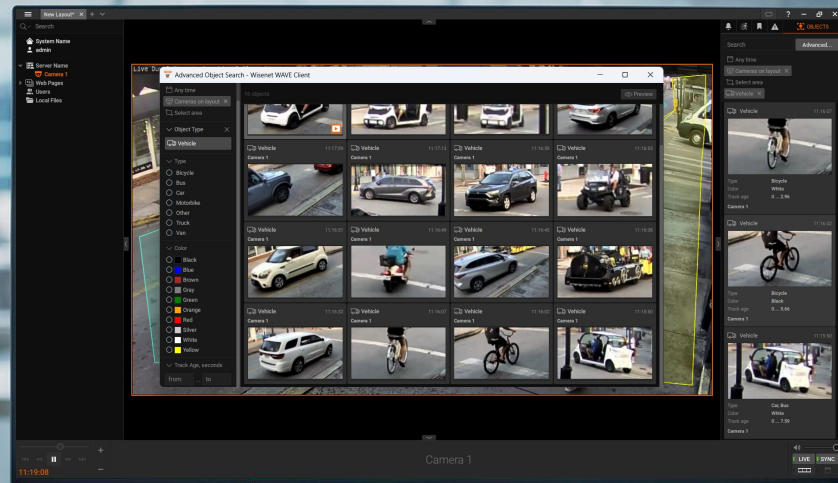
# Plugin Features

Detection classes:

People, Vehicles, Animals, Unknown

- Intrusion
- Area enter/exit
- Loitering
- Object guarding
- Object left behind
- Crowding
- Tailgating
- Line crossing

- ★ Retrospective search by appearance
  - search by vehicle type and color;
  - search by clothing color



# Plugin Features: Challenging Use Cases

CVEDIA's algorithms are reliably detecting common animals, e.g. cats, dogs, spiders, and birds, enabling security operators to receive **relevant** intrusion **alarms**.



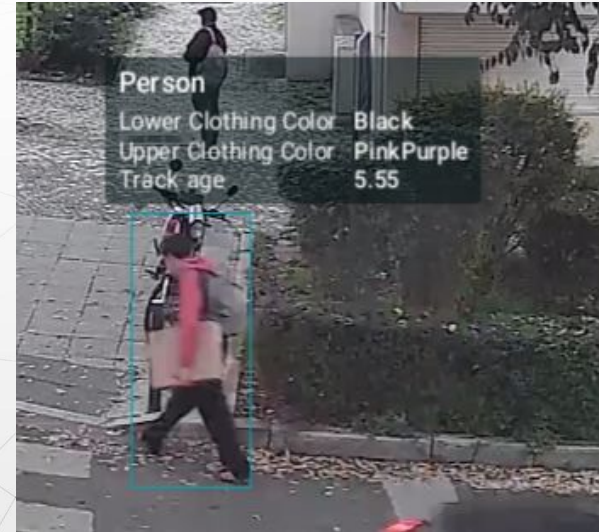
# Plugin Features: Weather Conditions

CVEDIA models are trained to perform well in **challenging conditions**, like rain, fog, wind, moving vegetation, and environments with different lighting.



# Plugin Features: Advanced Search

The plugin enables security operators to search for relevant incidents in seconds, drastically reducing the time it takes to find the object of interest.



# Use Cases

Designed for Diverse Applications



# Small Businesses

Enhance break-in prevention in  
areas of interest

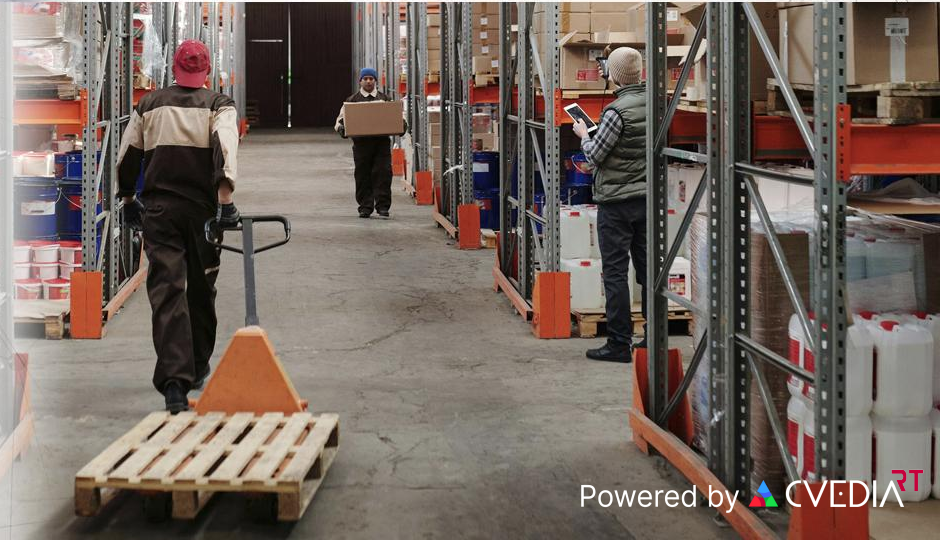
Features: Intrusion Detection, Loitering Detection



# Valuable Assets

Respond to unusual activity near critical  
areas (e.g., luxury cars, warehouses)

Features: Intrusion Detection, Loitering Detection



# Schools

Locate incidents in crowded areas (e.g. near lockers, parking lots, or recess areas)

Features: Intrusion, Loitering, Line Crossing



# Busy Roads

Search for incidents on high-traffic roads.

Features: Appearance Search





# Nightclubs & Restaurants

Identify events faster in high-traffic zones. Prevent theft and vandalism

Features: Line Crossing, Loitering, Appearance Search

# Queues & Crowds

Monitor crowd density and optimize customer experience

Features: Crowding, Line Crossing, Appearance Search



# Parking Lots

Improve vehicle security in low-traffic, low-visibility areas.

Features: Loitering Detection



# Shopping Malls

Enhance theft prevention in retail spaces with forensic search

Features: Appearance Search



# Public Spaces

Monitor and address loitering or crowd accumulation in public areas, such as ATMs or bus stops

Features: Crowding, Loitering, Intrusion Detection

# Restricted Areas

Monitor restricted areas for unauthorized access by individuals or vehicles

Features: Tailgating, Line Crossing



# Success Stories

## E-bike store incident: stopping a break-in before it happened

*"An e-bike store owner was having ongoing security issues, with repeated break-ins despite having barred windows and heavy locks. We set up the plugin on his existing cameras, which weren't high quality but were already installed. One morning, he called and said, 'Thank you — your system stopped a break-in yesterday.' The loitering alarm had triggered, and he saw someone attempting to cut a padlock through his camera feed. He used the system to speak through the camera and scare them off before they could break in."*

# Success Stories

## Warehouse diesel theft prevention

*"A local business was dealing with repeated thefts of diesel being siphoned from buses parked overnight. We set up the plugin with a PTZ camera to monitor the buses and configured intrusion detection rules. They told me it's been incredibly reliable and has already prevented several incidents. While they occasionally had cleaners set off the alarm, they now know any movement near the buses at night is detected immediately."*

# Success Stories

## Nightclub enhanced security

*"A nightclub was facing frequent incidents where they needed to review footage daily. After running the plugin in their environment for a trial, they realized how much time they were saving. They said, 'This makes it so much easier — we can find incidents in seconds instead of spending hours reviewing footage.' They loved how the plugin could instantly locate events, especially in high-traffic areas like entrances and checkpoints."*

# Success Stories

## High-traffic roads and pedestrian safety

*"One customer had a camera monitoring a busy road where incidents involving pedestrians occurred frequently. They said, 'Before using the plugin, searching for footage was impossible — motion search would bring up every passing car. With the plugin, we can filter for pedestrians only, making it simple to find exactly what we need.' It saved them hours of reviewing irrelevant footage."*

# Success Stories

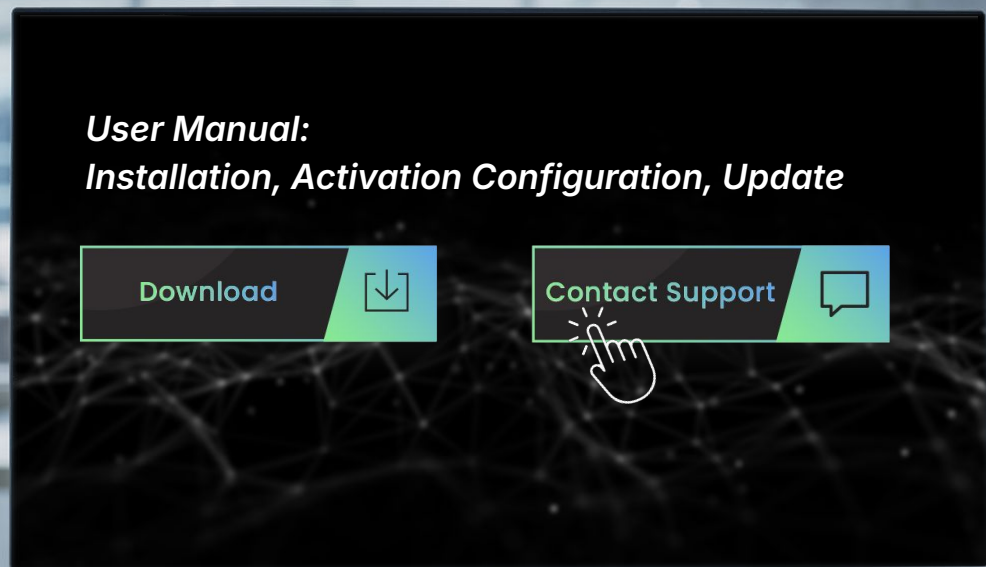
## School safety

*"Schools often need to review footage of crowded areas like locker rooms or parking lots. One school admin shared, 'We used to spend an hour manually searching footage for incidents. Now, with the plugin's retrospective search, it takes us seconds to locate the event.' This not only made their operations more efficient but also highlighted the value of the plugin for managing high-density environments."*



# How to Get Started

- Download the latest version on [rt.cvedia.com](https://rt.cvedia.com)
- Follow simple installation steps
- Start 30-days free trial



# Compatibility Notes

- CVEDIA-RT runs on Windows and Linux servers with minimal resource usage
- Runs on any NVIDIA GPU as long as 🙌 Cuda Compute Capability is greater or equal to 6.1
- Compatible with a variety of AI accelerators
- 🙌 More compatible platforms

## OpenVino with IGP / GPU:

- 6th or newer generation Intel Core processor with Intel® Iris® Plus and Intel® Iris® Pro graphics and Intel HD Graphics
- 1st or newer generation of Intel® Xeon® Scalable processors
- 11th or newer generation Intel Core processor with Xe architecture
- Intel Xeon processor with Intel® Iris® Plus and Intel Iris Pro graphics and Intel HD Graphics (excluding the e5 family)
- Intel® Iris® Xe MAX Graphics
- Intel Atom® processor with Intel® Streaming SIMD Extensions 4.2 (Intel® SSE4.2)

# CVEDIA Resources

- [Brochures](#)
- [User Manuals](#)
- [Best Practice Guide](#)
- [Demo Videos](#)
- [Online Documentation](#)
- [Benchmarking Results](#)



# Roadmap

## New Features Line-up

- Armed Person Intrusion Detection
- Fallen Person Detection
- License Plate Recognition
- PPE Head Gear Detection
- PPE Reflective Vest Detection
- Face Covering Detection
- Cell Phone Detection
- Smoking Detection





# CVEDIA

Contact Sales  
[support@cvedia.com](mailto:support@cvedia.com)