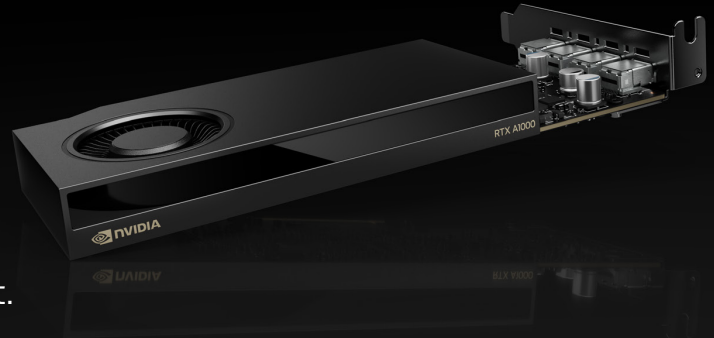




NVIDIA RTX A1000

Mighty performance. Minimal footprint.



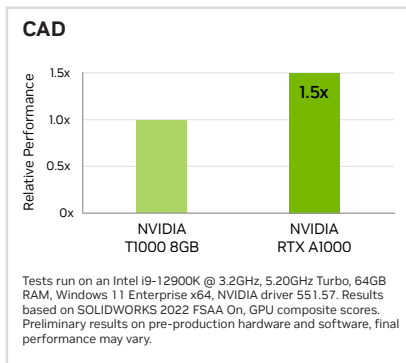
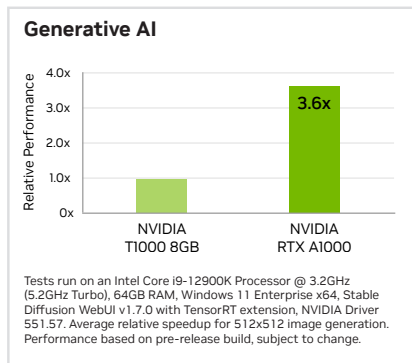
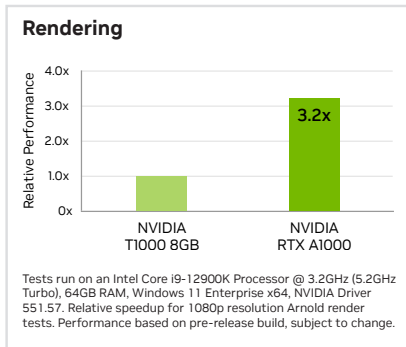
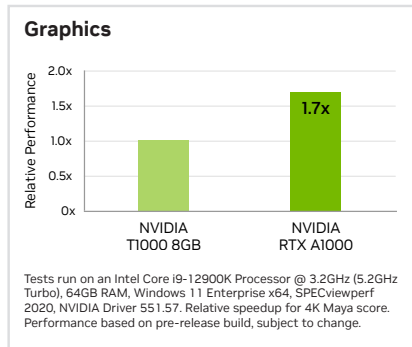
Small Size, Big Impact—The Ultimate Compact Power

The NVIDIA RTX™ A1000 is a powerful, low-profile GPU that brings RTX-powered real time ray tracing and AI acceleration to a whole new audience. Built on the NVIDIA Ampere GPU architecture, it combines 2,304 CUDA® Cores, 72 third-generation Tensor Cores, and 18 second-generation RT Cores, and 8GB of GDDR6 graphics memory. With the RTX A1000, you can create more compelling visuals, explore new AI-powered workflows, and boost your productivity, all from a small-form-factor solution.

NVIDIA RTX professional graphics cards are certified for a broad range of professional applications, tested by leading independent software vendors (ISVs) and workstation manufacturers, and backed by a global team of support specialists. Get the peace of mind to focus on what matters with the premier visual computing solution for mission-critical business.

Key Features

- > Second-generation RT Cores
- > Third-generation Tensor Cores
- > PCI Express Gen 4
- > Four Mini DisplayPort 1.4a
- > AV1 decode support
- > DisplayPort with audio
- > NVIDIA RTX Experience™
- > NVIDIA RTX Desktop Manager software
- > NVIDIA RTX IO support
- > HDCP 2.2 support
- > NVIDIA Mosaic¹ technology



Specifications

PNY Part Number	VCNRTXA1000-PB
EAN code	3536403399467
GPU memory	8GB GDDR6
Memory interface	128-bit
Memory bandwidth	192GB/s
NVIDIA Ampere-based CUDA® Cores	2304
NVIDIA third-generation Tensor Cores	72
NVIDIA second-generation RT Cores	18
Single-precision performance	6.7 TFLOPS ²
RT Core performance	13.2 TFLOPS ²
FP16 Tensor performance	53.8 TFLOPS ³
Peak INT8 Tensor performance	107.8 TOPS ⁴
System interface	PCIe 4.0 x8 ⁵
Power consumption	Total board power: 50W
Thermal solution	Active
Form factor	6,9 cm H x 16,3 cm L, single slot
Display connectors	4x Mini DisplayPort 1.4a
Max simultaneous displays	4x 4096 x 2160 @ 120Hz 4x 5120 x 2880 @ 60Hz 2x 7680 x 4320 @ 30Hz
Encode/decode engines	1x encode, 2x decode (+AV1 decode)
Graphics APIs	DirectX 12, Shader Model 6.6, OpenGL 4.6 ⁶ , Vulkan 1.3 ⁶

Ready to get started?

To learn more about the NVIDIA RTX A1000, visit:

[nvidia.com/rtx-A1000](https://www.nvidia.com/rtx-A1000)

1 Windows 10 and Linux. | 2 Peak rates based on GPU Boost Clock. | 3 Effective FP16 teraFLOPS (TFLOPS) using the sparsity feature. | 4 Peak INT8 TOPS with sparsity. | 5 RTX A1000 utilizes a full-length PCIe Gen 4 x8 interface. | 6 Product is based on a published Khronos specification and is expected to pass the Khronos conformance testing process when available. Current conformance status can be found at www.khronos.org/conformance

© 2024 NVIDIA Corporation and affiliates. All rights reserved. NVIDIA, the NVIDIA logo, CUDA, NVIDIA RTX, and NVIDIA RTX Experience are trademarks and/or registered trademarks of NVIDIA Corporation and affiliates in the U.S. and other countries. All other trademarks and copyrights are the property of their respective owners. APR24

PNY®

